



Swansea University  
Prifysgol Abertawe



[www.swansea.ac.uk](http://www.swansea.ac.uk)  
[www.abertawe.ac.uk](http://www.abertawe.ac.uk)

# XPLOIT: The Swansea Partners



Swansea University  
Prifysgol Abertawe

[www.swansea.ac.uk](http://www.swansea.ac.uk)  
[www.abertawe.ac.uk](http://www.abertawe.ac.uk)

supportive



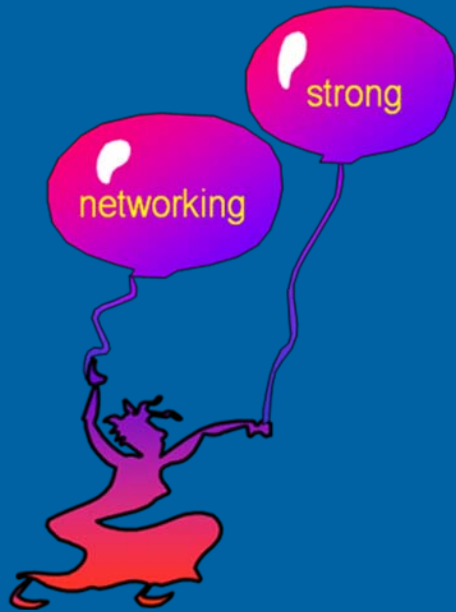
# Beginnings



Swansea University  
Prifysgol Abertawe

[www.swansea.ac.uk](http://www.swansea.ac.uk)  
[www.abertawe.ac.uk](http://www.abertawe.ac.uk)

# Grassroots: Glynneath



Swansea University  
Prifysgol Abertawe

[www.swansea.ac.uk](http://www.swansea.ac.uk)  
[www.abertawe.ac.uk](http://www.abertawe.ac.uk)

# DOVE Workshop



Swansea University  
Prifysgol Abertawe

[www.swansea.ac.uk](http://www.swansea.ac.uk)  
[www.abertawe.ac.uk](http://www.abertawe.ac.uk)

# ERDF - infrastructure



Swansea University  
Prifysgol Abertawe

[www.swansea.ac.uk](http://www.swansea.ac.uk)  
[www.abertawe.ac.uk](http://www.abertawe.ac.uk)

# ESF - Skills



## Curriculum Development



Swansea University  
Prifysgol Abertawe

[www.swansea.ac.uk](http://www.swansea.ac.uk)  
[www.abertawe.ac.uk](http://www.abertawe.ac.uk)

# Curriculum Development

National &  
UK Training  
Award



Swansea University  
Prifysgol Abertawe

[www.swansea.ac.uk](http://www.swansea.ac.uk)  
[www.abertawe.ac.uk](http://www.abertawe.ac.uk)



# Swansea Learning Partnership

Joint provision to provide advice, guidance & support to learners

**Joint projects:** Working with communities of interest

- /// *Equal*
- /// *Lingua*
- /// *Deep*
- /// *Swansea Arrivals*



# Joint Provision of Lifelong Learning



## Adult Learners' Week

DVLA annually supports Adult Learners' Week, the largest festival of learning in the UK. This year's event, led by Paul Ross, Open Resource Centre, yet again proved to be very successful. LICENCE captured the week on camera...



Erica Gresh-Jones promotes the use of Plain English



Gerwyn Griffiths, Chwarae Tuedd



Steve Marshall, Eiddi Ffiliog, provides information from Swansea Theatre of Experience Library



Representative for South PFA Tŷcwm Cwm



Paul Ross, National Change Academy, challenges a member of staff to a game of chess



Staff used for DVLA's 'gaming' chess's games



Representative from Swansea Council for Healthy Swansed



Chris Thomas and Sarah Higgs, Swansea Enterprise Centre



Kevin Quill, Quill demonstrates the Ukulele to Rhys (Rhys), LICENCE a specialist Tŷcwm Cwm. For more information visit a Tŷcwm



# Existing Networks

Regional  
Learning  
Partnership  
ESF funded



Swansea University  
Prifysgol Abertawe

[www.swansea.ac.uk](http://www.swansea.ac.uk)  
[www.abertawe.ac.uk](http://www.abertawe.ac.uk)

# Regional Learning Partnership SWWRLP

## *Combining Education & Regeneration*

- ❖ Local government
- ❖ Higher Education (University)
- ❖ Further Education (Colleges)
- ❖ Third Sector (non-profit organisations)
- ❖ Private Sector
- ❖ Careers Wales
- ❖ Job Centre Plus



# RLP – 3 pillars

- /// Partnership Brokerage & Development
- /// Skills Observatory – data
- /// E-learning Portal - as a 'live' tool for the planning and delivery of learning and education services.

<http://www.rlpwww.org.uk>



XPLOIT

Learning Communities/ City Region/ Unesco



Swansea University  
Prifysgol Abertawe

[www.swansea.ac.uk](http://www.swansea.ac.uk)  
[www.abertawe.ac.uk](http://www.abertawe.ac.uk)

# Lifelong Learning Promotional Activity

South Wales Evening Post, Swansea, October 26, 2012



## Students' snaps put city in global focus

PICTURES taken by five digital photography students are being used to promote Swansea around the world.

The work, all on a course run by Swansea College of Art, is being shown at the National Library of Learning and Innovation, London, from October 23-27.

Work by Barry Nicholas, Becky Da, Tracy Egan, Lynda Wiles and Alan Williams is to appear in a range of books and printed publications including the book, Swansea: The World's Capital.

Wales' First Minister Iwan Rhys Iwanos has praised the work, saying it is a "great example of the city's creative talent and the quality of its education."

"I am delighted that these artists' images are not only highlighting what a wonderful place we live and work in, but also highlighting what talented people we have in the city and the quality of our education."

Becky Egan, from Warranbydd, said: "I really want to be a part of this and the main learning process from taking the photos is developing the image and seeing the finished work. We felt that Swansea is recognized in something that is so special."

Lynda Wiles, a student at the college, said: "I was delighted that the images are being used to help promote our wonderful city. The success of these students' images has attracted our adult education classes and help people to improve their skills, self-confidence and job prospects."

Tracy Egan, a student at the college, said: "I really want to be a part of this and the main learning process from taking the photos is developing the image and seeing the finished work. We felt that Swansea is recognized in something that is so special."

Barry Nicholas, a student at the college, said: "I was delighted that the images are being used to help promote our wonderful city. The success of these students' images has attracted our adult education classes and help people to improve their skills, self-confidence and job prospects."

Alan Williams, a student at the college, said: "I really want to be a part of this and the main learning process from taking the photos is developing the image and seeing the finished work. We felt that Swansea is recognized in something that is so special."

**LANDMARK** Barry Nicholas took this photo in Costa Smeralda.

**SCENES** Lynda Wiles (above) took this photo in Swansea.



Swansea University  
Prifysgol Abertawe

[www.swansea.ac.uk](http://www.swansea.ac.uk)  
[www.abertawe.ac.uk](http://www.abertawe.ac.uk)

# ICT Training in the Community

This student has overcome personal difficulties and used her experience to support a voluntary group for Amputees. She has created a web site for the group and set up an e-selling facility. Well covered in local newspapers





# NIACE Adult Learners Week



Swansea University  
Prifysgol Abertawe

# Swansea learning festival

part of adult learners' week  
12-20 MAY 2012



All the  
Events are  
**FREE!**



# What's on

- 800 fun learning events and taster sessions Wales-wide
- Over 30,000 people across Wales trying something new
- Don't miss out!

niace



[www.swansea.ac.uk](http://www.swansea.ac.uk)  
[www.abertawe.ac.uk](http://www.abertawe.ac.uk)

S  
E  
A

ortive

**Can your team create the best new enterprise in the competition?**

**You have from November 12th until December 31st to make a profit from your initial loan of £50!**



Swansea University  
Prifysgol Abertawe

Teams of five Swansea students can be from any year or any subject area. Prizes for best College teams, best mixed teams, best overall.

Contact Swansea Employability Academy for further information:  
[employability@swansea.ac.uk](mailto:employability@swansea.ac.uk)

**£50  
CHALLENGE**



Swansea University  
Prifysgol Abertawe

[www.swansea.ac.uk](http://www.swansea.ac.uk)  
[www.abertawe.ac.uk](http://www.abertawe.ac.uk)

# SEA



Edwina Hart - "I congratulate Swansea on its innovation"  
By Swansea University ★ Faverts Comment



Edwina Hart, with College employability champions

